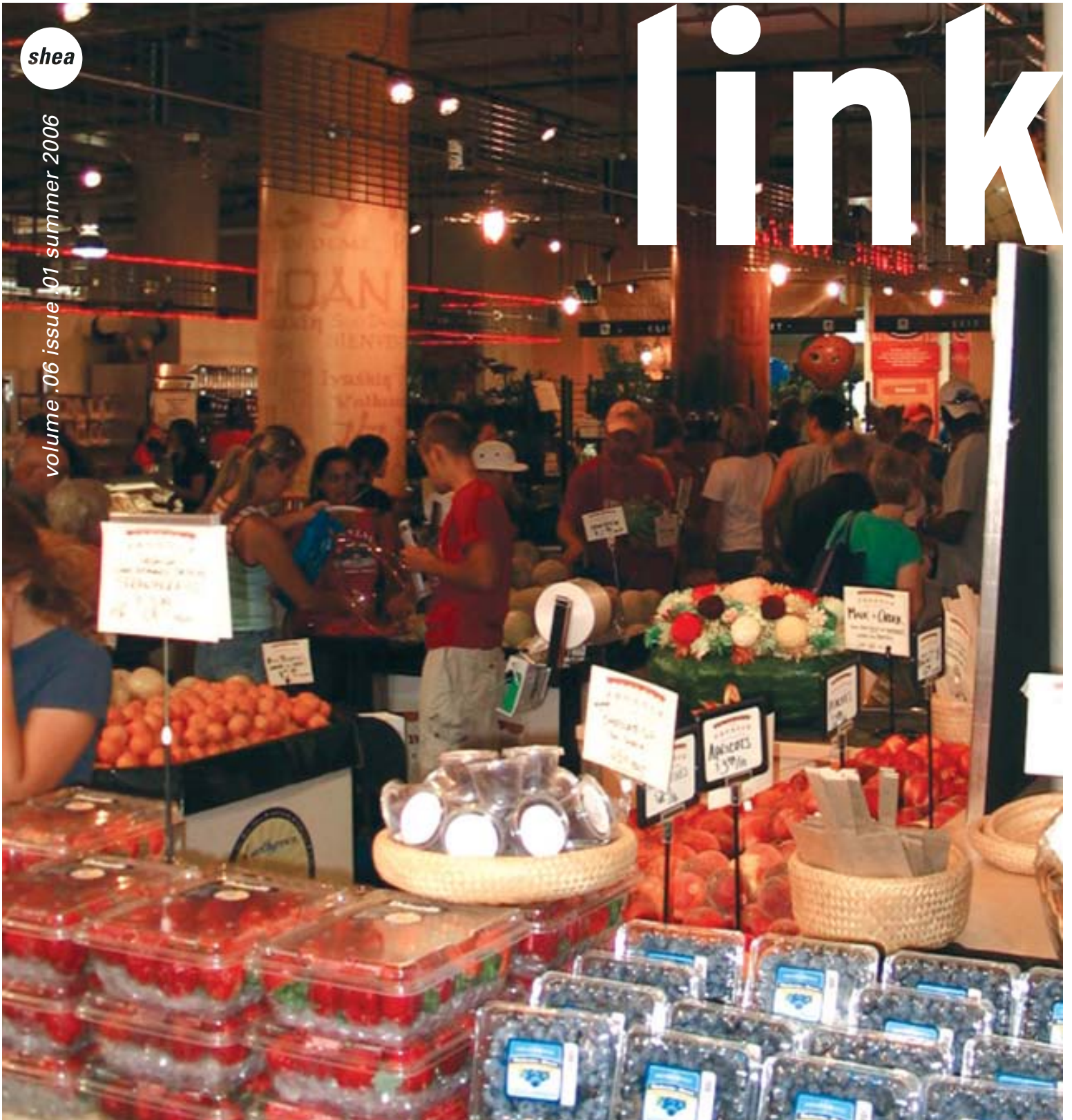


shea

volume .06 issue .01 summer 2006

link



community & culture

The Grand Opening of Minneapolis' Midtown Exchange has recharged the neighborhood.

Midtown GLOBAL Market

shea

The much-anticipated public market

portion of the massive Midtown Exchange development project in Minneapolis, opened to the public as part of a celebratory grand opening of the Midtown Exchange on June 3, 2006. Shea provided design and architecture services for the market on behalf of the Neighborhood Development Center, (a St. Paul non-profit organization that helps entrepreneurs in low-income neighborhoods,) the Latino Economic Development Center, African Development Center and the Powderhorn Phillips Cultural Wellness Center.



The goal of the Midtown Global Market is to provide a community gathering place with a vast array of fresh and prepared foods offered in an energetic multi-cultural setting. The design of the Midtown Global Market was inspired by indoor, year-round public markets from around the world, where a variety of vendors sell prepared foods, specialty groceries, meat, fish, produce, cheese, bread, flowers, arts, crafts and more.

The design of the Midtown Global Market was inspired by indoor, year-round public markets from around the world...

Adam Meyer, project architect explains, "Shea's challenge was to design a space that would be vibrant and lively, while allowing individual tenant spaces to be discernible in the greater context of the bustling market." Individual stalls were designed to accommodate a variety of tenants, offering sinks and water hookups for some, while offering full kitchen capabilities for others. The market has capacity for 60 small vendor spaces with areas ranging from 320 to 1800 square feet, as well as space for two full-service sit down restaurants.

Shea worked with the Ryan Companies development team early in the project planning stages and developed the *Midtown Exchange* name and logo for the former Sears building. As redevelopment rights were awarded to Ryan, Shea was selected to provide design and architecture services for the public spaces of the complex as well as the Global Market.



Midtown Exchange is a Ryan Companies unique mixed-use redevelopment of the former historic Sears building on Lake Street and Chicago Avenue in Minneapolis. The project includes the Midtown Global Market, the Chicago condominiums, Midtown Exchange apartments, Allina Commons, the Hennepin County Service Center and soon, the Midtown Exchange Condos on the Greenway.

For more information: www.midtownexchange.com

art connection

The Midtown Exchange art program includes works by nine local artists that were culled from a culturally diverse group of more than 30 artists.

The finalists were selected based on their bodies of work, professional history and connections to the neighborhood. Shea was involved in selecting the public areas where the art is displayed. The pieces were unveiled at the building's Grand Opening in June. The artwork does a great job of representing the new cultural diversity of the neighborhood and it connects to Midtown Exchange's theme of "Unity-Community-Opportunity."



Recognized

The Midtown Exchange was recently recognized by The Minneapolis Heritage Preservation Commission and the Minneapolis Chapter of the American Institute of Architects, receiving the 2006 Minneapolis Preservation Award for Adaptive Reuse of the Sears and Roebuck building.



Shea is proud to be a part of the design teams that made it all possible.





La Belle Vie



La Belle Vie, one of the most celebrated and critically acclaimed restaurants in Minnesota,

planned to relocate from an outlying area to the downtown core of Minneapolis. The ideal relocation for them was 510 Groveland, a historic and stately apartment building that had previously housed a fine dining restaurant.

Gorgeous elements of the existing architecture were uncovered and restored and updates were made to the furnishings and finishes. The restaurant provided an opportunity for elegance and sophistication, while the lounge area offered a more casual relaxed option.

The key things for Shea during a historic renovation are to be sympathetic to the quality elements that exist, understand their value to the past and then carry them into the future, not as a period piece but as a vibrant evolution into something new.

To that end, we recognized that the exquisite mouldings throughout the space had to be saved and enhanced; the fireplace needed to be restored; the terrazzo needed to have 40 years of grime removed;

The key things for Shea during a historic renovation are to be sympathetic to the quality elements that exist ...

the chandeliers needed to be cleaned and repaired; and the ceiling trim needed to be redone. The lounge required a complete overhaul of the original parlor. Additions included a wood bar, new furniture, custom rugs and accessories. A signature enhancement of the space involved the addition of lights under the old radiator covers to create a luminescent effect in the new drapery.

The main dining room was transformed by updated lighting, new furniture, artwork, new doors and wine cabinets that enhance the space without taking away from the original architecture. A large, festive captain's table helps to reinforce the upscale, casual nature of the environment.

The result is a warm and inviting space that has been a hit with patrons. City Pages restaurant reviewer Dara Moskowitz wrote, "the physical space is everything you'd hope for on the fanciest nights of your life..." La Belle Vie's food and service are at the top of the dining experience in the region. Shea is proud to be part of the total dining experience that is being offered.



La Belle Vie
510 Groveland
Minneapolis, MN
55403

612-874-6440

SHEA RECENT AWARDS AND ACCOLADES



Shea won the 2005 STARRSM Award for the design of Tryg's Restaurant in Minneapolis.

The STARRSM Awards are presented annually by the Minnesota Shopping Center Association (MSCA) to recognize excellence in the retail and shopping center industry. STARRSM stands for "Shopping Center Tribute Award for Retail Real EstateSM." Awards are offered in eight separate categories and Shea and Tryg's took the prize for the "Interior Design, Restaurant/Foodservice" category. The event was held in December at Midland Hills Country Club in St. Paul.



Shea also won *Retail Traffic Magazine's* 2006 Superior Achievement Award in Design and Imaging (SADI) Award in the New Upscale Dining category for the design of Tryg's Restaurant in Minneapolis.

This honor is bestowed to those who have successfully balanced form and function to create retail environments that fulfill the needs of the consumer while stirring the imagination. This is the second SADI Award for Shea, Inc., which took the same prize for Solera Restaurant in 2004.

Now in its 17th year, the Retail Traffic SADI Awards program is the industry's most respected and coveted design tribute. This honor recognizes outstanding achievement in creating successful retail environments and the winners are those architects and designers that craft memorable places, blending aesthetics with function to create a superior design that reflects the best the business has to offer.



Display and Design Ideas Magazine
2005 Top 100 Design Firms



VM&SD Magazine
2005 Top 50 Retail Design Firms



Interior Design Magazine
2005 Top 200 Design Giants
2005 Top 50 Hospitality Giants



LoTo, the latest venture by restaurateur David Fhima has been open for business for one year. Fhima worked with Shea on design of the space in St. Paul's Galtier Plaza in Lowertown.

LoTo is a European style bistro featuring casual world cuisine available to take out or enjoy in-house. The 11,000 square foot space includes a coffee bar, bakery and full service dining. LoTo is open early mornings daily, features extensive Happy Hour specials and is open late each night. The space features casual full service dining areas as well as self-service counters, with atrium seating and outdoor patio seating.

The overall design of the space is contemporary and casual with Japanese influence.

The overall design of the space is contemporary and casual with Japanese influence. Continuity is maintained through thoughtful juxtaposition of both raw and finished materials. Finished bamboo and maple floors and tables are framed by raw steel and concrete elements. The bar is the centerpiece of the design and features a ceiling of undulating ribbons, between which cables carefully suspend steel glass racks. Large sliding glass doors open the bar up to the atrium.

"The bar is a home run," said Greg Houck, project architect for Shea. "It is the main focal point as you approach the space and incredibly comfortable once you're inside."



LoTo
380 Jackson Street,
St Paul, MN 55413
651-209-7776



Patrick's

bakery & bistro

In November, 2005, Shea-designed Patrick's Bakery & Bistro opened in Wayzata, Minnesota.

You may be aware of French chef Patrick Bernet's two Richfield locations featuring award-winning bakery goods, pastries and chocolate. For his third location, Patrick, along with wife Azita and business partner Robert Kinsella, is featuring these signature items with the addition of an a la carte

dinner menu and large wine selection. The 1,500 square foot space has the feel of an authentic French bistro with Venetian plaster walls, dark woods, custom European light fixtures, custom ironwork, marble countertops, hardwood floors and custom area rugs. The cozy space includes a large built-in mahogany wine rack, bakery racks and cases featuring French breads and delectable baked goods, and table seating for about 45 patrons.



Patrick's Bakery & Bistro

331 Broadway Avenue South, Wayzata, MN 55391
952-476-5444

two hot edina boutiques:

Dugo, short for Dress Up Go Out, is a retail clothing concept created by Nancy Shank featuring fine clothing for business, charity balls, summer parties and weddings.

According to Shank, "dugo brings back the satisfaction of dressing smart and dressing well. It is ideal for intelligent, modern women looking for clothes that offer extra, effortless panache and style." Shank had been operating the store in a temporary space in the Galleria shopping center in Edina since early 2006, while design and construction of the new store, also in Galleria, was taking place. The new Shea-designed store opened in May.

dugo

DRESS UP GO OUT

dugo, 3595 Galleria Shopping Center,
Edina, MN, 55435, 952-746-4440

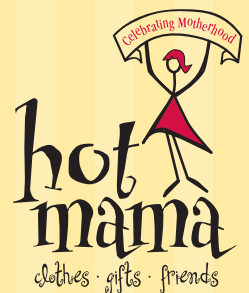
Hot Mama opened its doors in the chic 50th and France shopping district in November 2004. The concept was developed by Michael and Megan Tamte soon after the birth of their first-born, Allison, in 1997.

Recognizing and appreciating the change parenthood brought on her life, Megan sought to build a store that focused entirely on serving moms and moms-to-be. Frustrated that most boutiques catered to singles and those in their early twenties, she targeted the missing gap – her generation – a large group in their late twenties to mid-forties who had or were having children.

By building a theme around motherhood, Megan created an upscale boutique that nurtured, encouraged and supported mothers while offering only the most contemporary clothing to the fashion-forward mom. Hot Mama is designed to be welcoming and child-friendly. The service is intended to be high-touch with friendly guidance from Hot Mama stylists who pride themselves on finding the best fit for women.

Shea partnered with Hot Mama in 2004 to design the first location and since has designed two more in **Maple Grove, Minnesota** and **Glenview, Illinois**. Shea is currently partnering with Hot Mama on design of their fourth location on **Grand Avenue in St. Paul, Minnesota**.

Hot Mama, 50th Street,
Edina, MN, 55435, 952-746-4440





Shea recently worked with David Koch, owner of Bellanotte in Block E, on a concept called *bella*, in Blaine, Minnesota.

Koch and partners launched the new suburban sibling in March, 2006. Working with Shea on design of the space, they wanted to bring the same level of warmth, sophistication and energy as Bellanotte has brought to downtown.

Building off the great success of Bellanotte's first year, Koch wanted to introduce a slightly more casual venue featuring lunch, dinner and late night fare. The menu for *bella* contains authentic Italian cuisine similar to Bellanotte, but also includes more casual flatbread pizzas and carvery sandwiches. There is a full bar and a DJ spins for the late night crowds. With its urban yet elegant ambiance, *bella* offers the city of Blaine the hip atmosphere of a downtown restaurant in a convenient suburban location.

Shea worked with Koch on design development and construction documentation for the restaurant which is located on Highway 65 in Blaine.



Shea brought the same level of warmth, sophistication and energy as Bellanotte has brought to downtown.

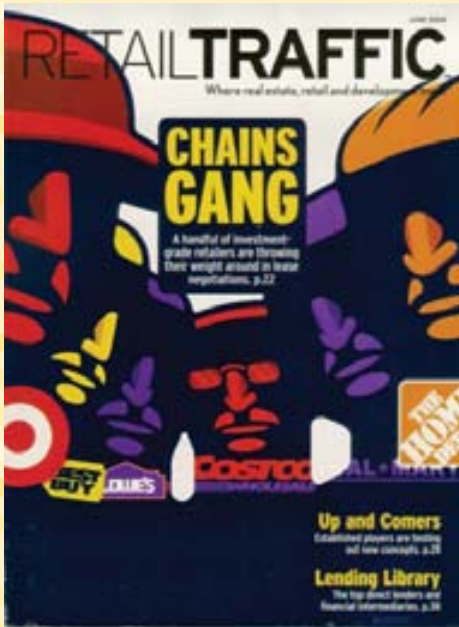
bella, 10950 Club West Pkwy
Blaine, MN, 55449
763-746-9990





Electronic versions of Shea link are available at www.shealink.com.
Questions? Comments? Contact us at info@shealink.com.

>> check it out



Shea Receives Superior Achievement in Design and Imaging Award

Shea was awarded *Retail Traffic's* annual Superior Achievement in Design and Imaging award for Tryg's restaurant. Shea's Andy McDermott accepted the award at Retail Traffic's event, held at the Westin Casuarina Hotel and Spa in Las Vegas. Find more details on awards inside!

www.shealink.com